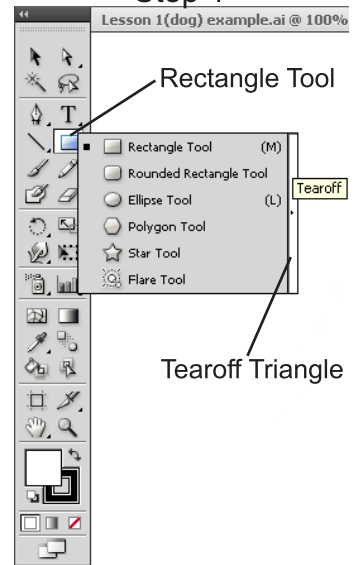
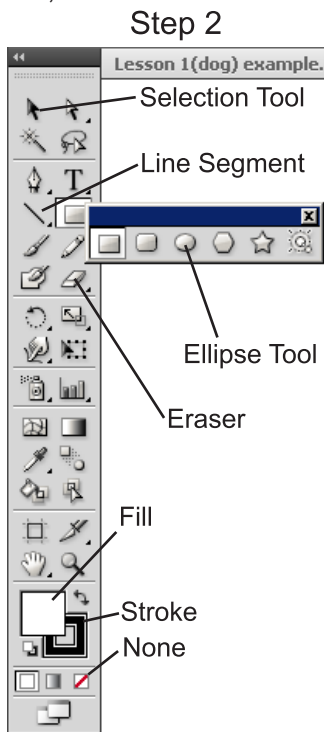


Open the Illustrator dog file by clicking on the image of the dog on the Intro to Graphics web site. Click on the downloaded file and it should open in Adobe Illustrator CS6. If using Explorer, it may open a PDF file that can simply be saved and then opened in Illustrator. Once the file is open in Illustrator you will see a drawing of a dog that has already been created. By following the steps listed here, you will recreate this image. But first, create a new layer to draw on (this will be layer 2) and lock down layer 1.

1. Hold down the mouse button on the rectangle tool until a group of tools appears and then drag to the tear-off triangle at the end. Once the new box pop up, release the mouse button.



2. Before proceeding to draw the image, change the fill color in the tool bar to none. To do this, select the fill swatch in the tool bar, and then choose none (slanted red line just to the right and below the fill swatch). Also, select the stroke swatch, open the color panel by clicking on the color icon on the right, then select blue from the color spectrum.



3. Now select the ellipse tool and make an ellipse the size of the dog's head, ignoring the cheeks. If the ellipse isn't the same size, use the selection tool to drag the edges or move the ellipse accordingly.

Note: If the image does not show up when deselected, there is no fill or stroke to the item. To give it a stroke, select it with the selection tool, bring the stroke to the front and choose a color.

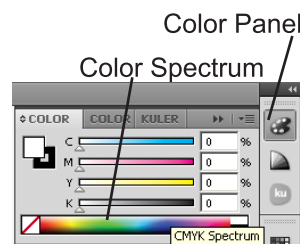
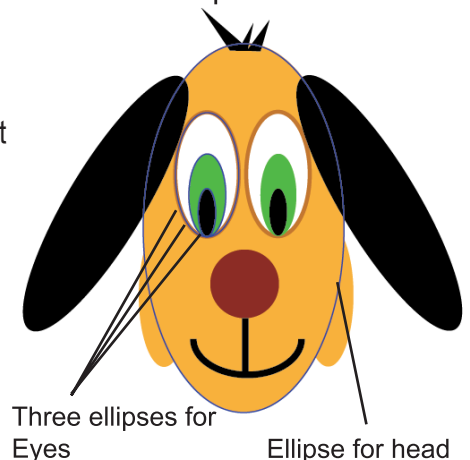
4. To draw one eye, repeat step three for the White, Green, and Black ellipses that form the eye. Don't worry about adding color to the ellipses yet and DO NOT draw an ellipse for the darker brown around the white of the eye.

5. Upon completing the first eye, use the selection tool, hold down the shift key, and select each of the ovals that make the eye. Choose Edit>Copy, and then Edit>Paste.

6. With the selection tool, select and drag the eye into its proper location.

Note: The arrow keys can be used to make small adjustments in location.

Steps 3 & 4

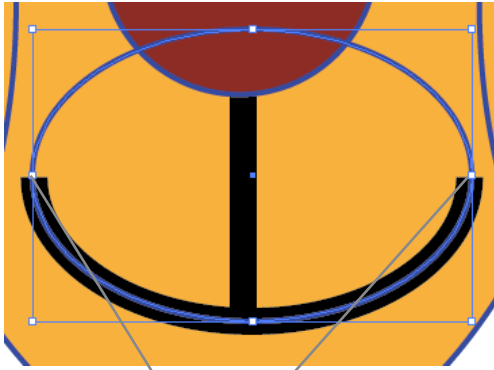


7. Using the ellipse tool again, draw one of the dog's ears, and use the rotate tool to rotate it as well as the selection tool to resize it. Then repeat again for the dog's cheeks.

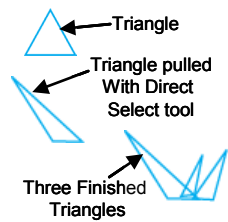
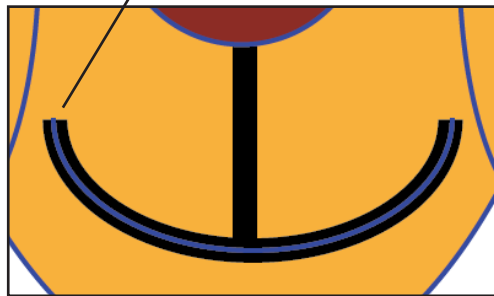
8. To draw the dogs nose use the ellipse tool, but while drawing the ellipse, hold down shift to ensure that the nose a perfect circle.

9. Use the ellipse draw the ellipses that form the dogs cheeks.

10. To make the smile, select the ellipse tool and draw an ellipse. Align the bottom of the ellipse with the curve of the smile. Choose the Scissors (hold down on the eraser tool until a box pops up, and choose the scissors tool) and, with the ellipse still selected, click once on the square at the right edge of the ellipse and once on the red point at the left edge of the ellipse.



Left & Right Squares
Top ellipse deleted



11. The ellipse has now been cut into two pieces. Select the top piece with the selection tool and delete it.

12. Next draw the straight line that connects the nose to the mouth by selecting the line segment tool . Holding down the shift key, click and drag a line that runs from the middle of the smile up to the bottom edge of the nose. Release the mouse button and the shift key.

13. The last item that needs to be drawn is the hair. To do this, use the polygon tool. This can be found the same way that the ellipse tool was found earlier. Hold down the mouse button on the rectangle tool until a group of tools appears and then drag to the tear-off triangle at the end and release the mouse button. Select the polygon tool (the tool that looks like a six side stop sign).

14. Click once anywhere on the page and a pop-up window will appear. Change the number of sides to 3 and click ok. A three sided shape, a triangle, has now been produced. Using the selection tool move the triangle near the hair example that was given.

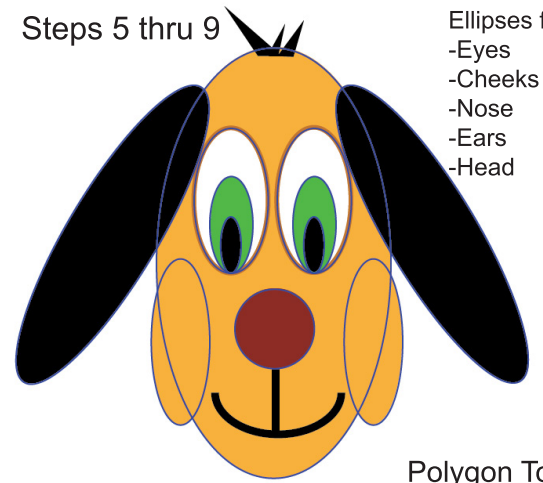
15. Choose the Direct Select Tool (the white arrow) and select the top point in the triangle. The point should now have a solid red square, while the other two are red outlined squares. Click and drag that point to the left to make the triangle look similar to the triangle that forms the first piece of hair on the example.

16. To add color to the dog, select the small oval that forms the pupil, then choose the Eye Dropper Tool, and click the color that you want from the example. Doing this will match the existing colors. To customize the colors, the colors from the color palette may be used. Simply select the object, select the fill swatch from the tool bar (this will bring it in front of the stroke swatch, and choose a color from the color palette.

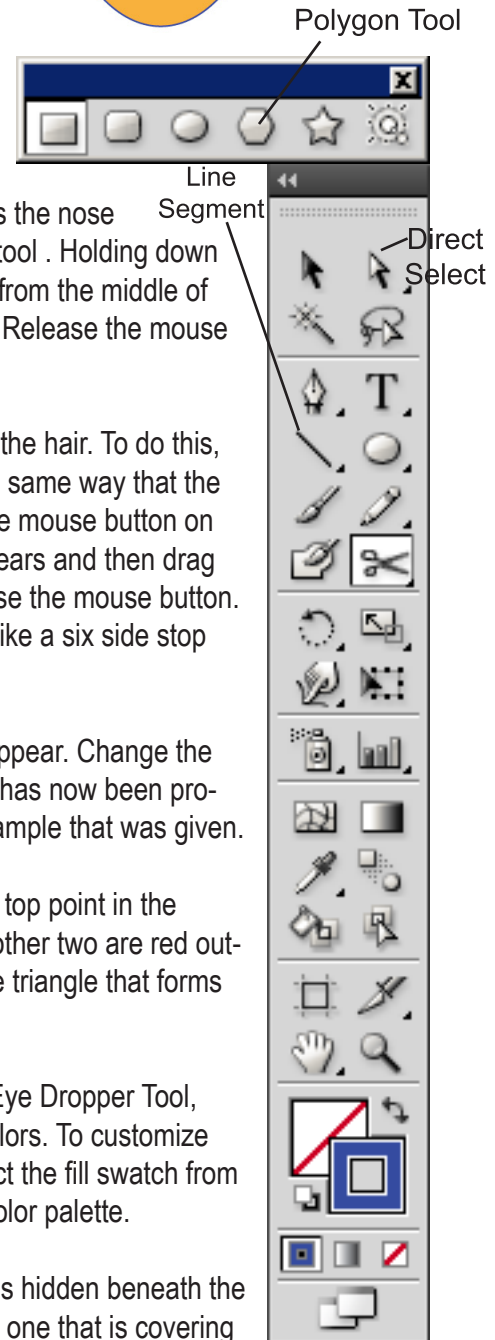


Black ellipse hidden
beneath green ellipse

Steps 5 thru 9



Ellipses for:
-Eyes
-Cheeks
-Nose
-Ears
-Head



Note: When adding fill colors to objects, if an object disappears, it is hidden beneath the fill of another object. To make the hidden object appear, select the one that is covering it and then choose object arrange and either "Send to Back" or "Send Backward."