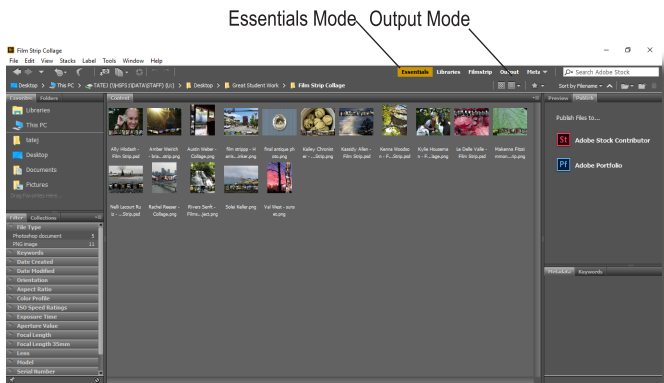


# Creating a Film Strip Collage



**1. Select Photos** – In Bridge, find and select each of the pictures that will be to use in a filmstrip. Essentials view is the easiest way to view a large amount of pictures at once and can be found in the top right corner. Pressing CTRL will allow more than one image to be selected at a time.

**2. Create a PDF in output mode** – Now that the photos are selected, switch to output mode in the top right corner. Choose Output and enter 12" x 2" and a resolution of 300 ppi.

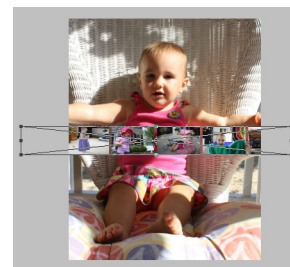
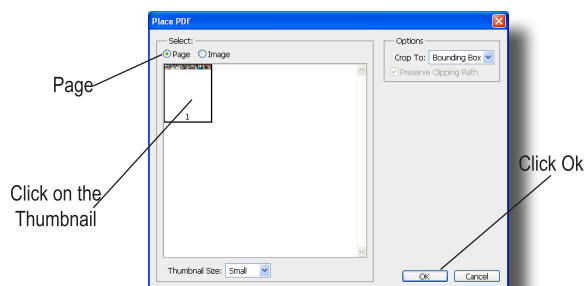
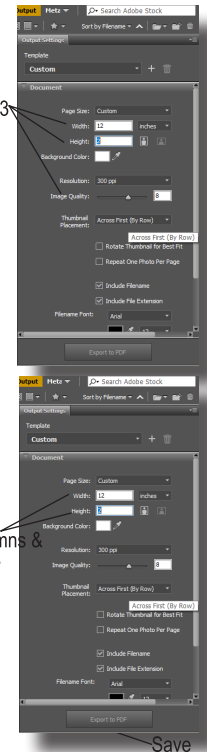
**3. Set Layout & Preview** – Scroll down the panel options to the Grids & Margins section. Here, enter 6 for the number of Columns and 1 for rows. The horizontal spacing can be changed to .13 in and the rest of the options can remain 0. These numbers are for a horizontal strip & should be reversed if making a vertical strip.

number of Columns and 1 for rows. The horizontal spacing can be changed to .13 in and the rest of the options can remain 0. These numbers are for a horizontal strip & should be reversed if making a vertical strip.

**4. Turn off options & Save PDF** – For this project, Filenames, page numbers, playback options and watermarks are unnecessary, so turn these options off or set them to none. At the bottom of the panel, choose the Export to PDF option and name the file then click OK.

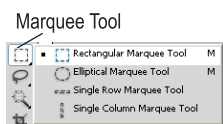
**5. Open the background image in Photoshop** – In Photoshop, choose and open the image that will be the main photo in the project. Crop the Picture to 8 x 10. The image resolution needs to be at 300 ppi. Resizing and resolution can be found in Image>Image Size.

**6. Place the PDF** – Choose File>Place Embedded, find the PDF that was just created and click place. A dialogue box will appear. Here, choose Page instead of Image and then click OK. If necessary, adjust the size of the placed graphic (Edit>Free Transform, and move the control handles) then press enter.



PDF is too big to fit, Choose Edit>Free Transform and rescale while holding Shift

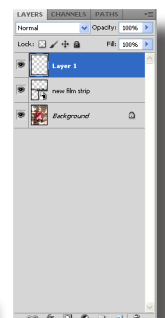
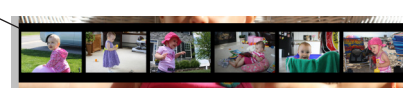
**7. Add a Layer and fill it with black** – While pressing Ctrl, click on the new layer icon in the bottom right corner of the layers panel to add a layer below the film strip. Select the Rectangular Marquee tool (M) and make a selection a little larger than the film strip at the top and bottom. Press d to reset the foreground/background colors to their default and then Alt Backspace to fill the area with black. Then press Ctrl D to deselect the selected area.



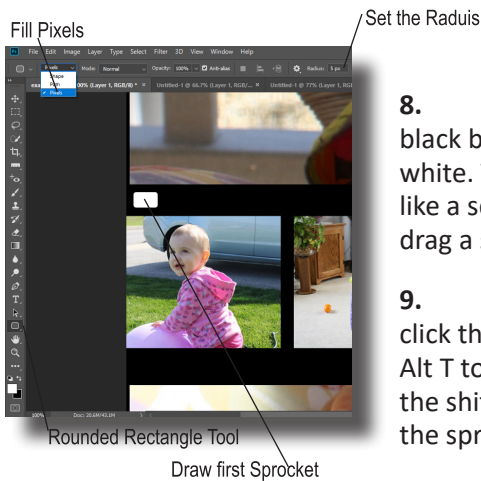
Drag a Marquee leaving space at the top & bottom



After pressing D, click Alt, Backspace to make the selection black

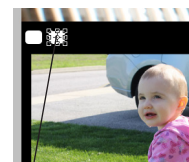


Click the "Create New Layer"



**8. Draw a film sprocket** – Click on the new layer icon again to add a layer above the black box. Choose the Rectangle Tool and then press X to switch the foreground color to white. The shape tool must be set to fill pixels (the third icon in the Options Bar-it looks like a square) and set the radius to 5 px to round the edges. Click and drag a square to represent the first sprocket.

**9. Copy and position a second sprocket** - Holding the Ctrl key, click the sprocket layers thumbnail to make it a selection. Press Ctrl Alt T to access the free transform tool in copy mode. While holding the shift key, drag the sprocket to the right. Just leave space between the sprockets. Press Enter when done.



Position second Sprocket & press enter

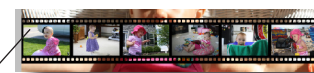
**10. Complete the Sprockets** – Press Shift-Alt-Ctrl-T repeatedly to make the sprockets spread across all black box. Ctrl click on the sprocket layer thumbnails, then select the move tool (v). While holding Alt and Shift, click and drag the row of sprockets to the bottom. Next, Ctrl click on the sprocket layer, then select the layer with the black box on it. Press Ctrl X to cut sprocket holes from the the black box. Now the original sprocket layer can be drug to the trash.



Complete the first row by Shift, Alt, Ctrl, T repeatedly



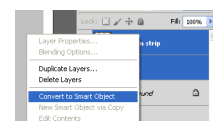
Complete the second row by making the layer a selection (Ctrl click on layer) and Alt, Shift Drag with the move tool



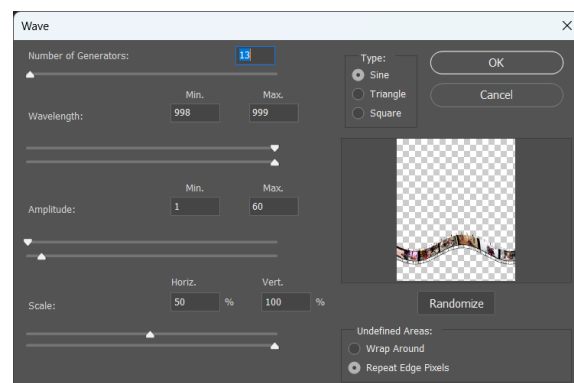
Load the Sprocket layer as a selection (Ctrl click on thumbnail) then choosing the black strip layer & cutting

**11. Make the film wave** – Select the black box layer and the photos layer by holding shift and choosing both. Right click on either one of the layers and a new menu will pop up.

Here, choose convert to smart object. Now click Filter>Distort>Wave. The benefit of this tool is that it allows



Select both layers by holding shift then right click and choose a preview. Adjust the wave until satisfied.



**12. Save the file as a PSD to preserve the layers and also save a second time as a PNG so that it can be used by other applications as well.**

Example with 2 film strips in it