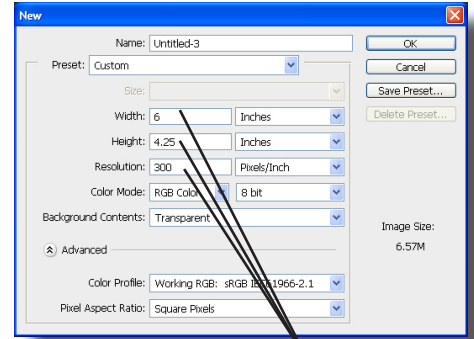


# Clipping Group Card

1. Create a new Photoshop document with a resolution of 300 and size 4.25" x 6." The orientation should match the space it should occupy in the InDesign file.

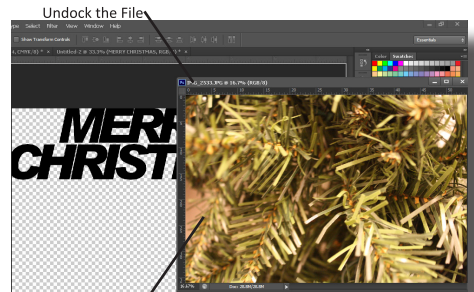


Set Width, Height & Resolution



Tracking will change the spacing between each letter (squeeze them together or pull them apart).

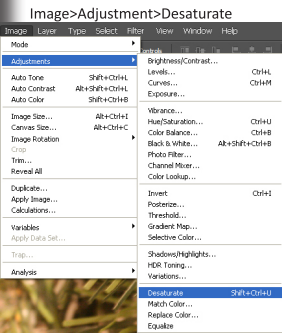
3. Once the type formatting looks good, use the move tool to position it where it should appear in the document.
4. Open the picture that will be used for the background image.



Drag the picture to the other file with the move tool

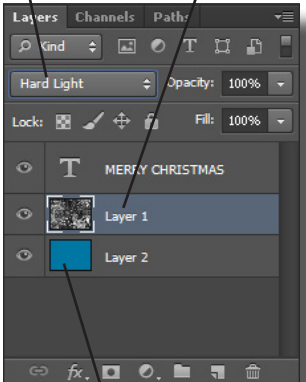
Change blending mode

Select photo layer



Undock the file and use the move tool to drag the photo to the document with the text. The picture may be a little big, so choose Edit > Free Transform (Ctrl T) to scale it down. The image needs to be the same size as the original document.

5. With the layer that the picture is on selected, choose Image > Adjustment > Desaturate. This will drop out the color and any cast that was with it.



New Layer, filled with color

Add layer below text

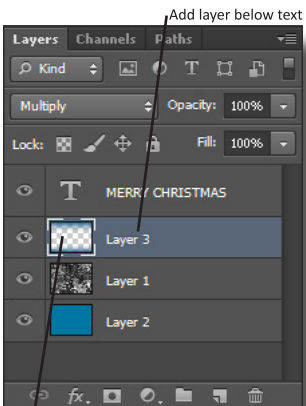


select the Gradient tool. It may be below the Paintbucket Tool. With the gradient tool chosen, change the first option to foreground to transparent from the list. Also, make sure that the gradient style is set to linear. Now hold the Shift key (this will keep the gradient perfectly vertical) and drag a gradient in from the top to down about 1/4 the distance and from the bottom up the same distance.

6. Now create a new layer just below the background photo. Choose a color from the swatches or color picker to overlay with the photo and then press Alt, Backspace to fill the layer with that color.

7. Select the photo layer and change the blending mode for the layer to Hard Light.

8. Add a new blank layer just above the photo layer. Now

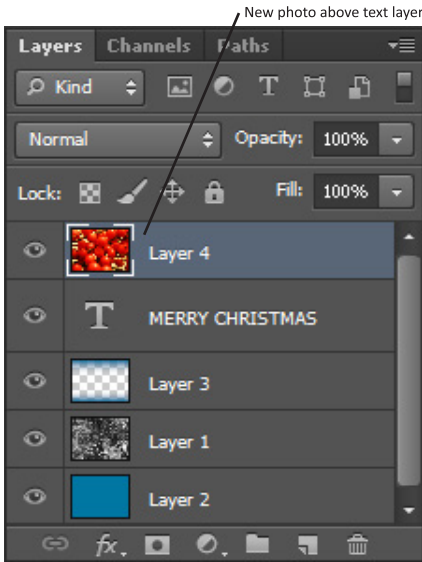
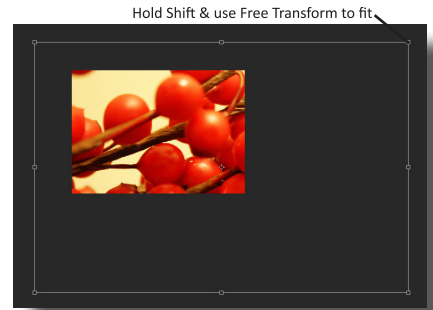


Gradient on top & bottom

9. Next, change the blending mode for this layer from Normal to Multiply. This will give the image a vignette style appearance.

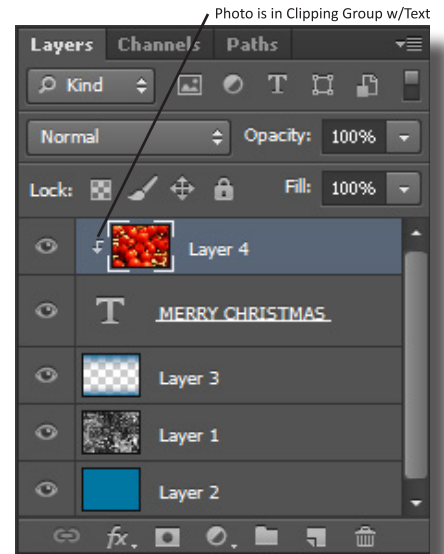
10. Now open the image that will go inside the text. If the image needs any last minute edits, make them and then undock the file. Choose the move tool and drag this new file over into the file with the text and other image.

11. Once again the image is probably too large to fit in the document so use the free transform tool (Ctrl T or Edit>Free Transform) to rescale it.



12. Before going any further, make sure that the new pictures (the one that should be inside the text) is above the text layer. If not, simply drag it to the top.

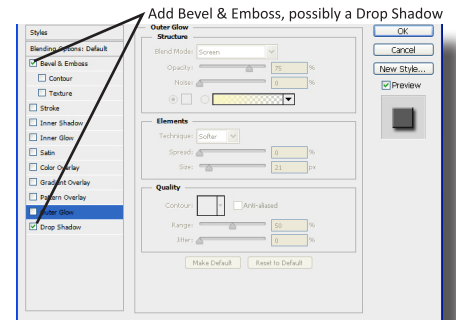
13. Now with the top picture still selected, hold down the Alt key and hover over the area between the top photo and the text layer. A square with an arrow should appear. When it does, simply click and the layer should now be "clipped" to fit inside the text. Only the pixels that fit inside the text are visible. The text can be transformed again in the size is not adequate. Also, in free transform, the text could be rotated.



Free Transform again to rotate or adjust proportions



14. The final step is to add effects. With the text layer selected, click on the effects icon (fx) at the bottom of the layers panel. Choose Bevel & Emboss to make the text look 3D. Also, to add more depth to the front of the card, choose Drop Shadow to apply a shadow for depth.



Example 1



Example 2